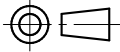


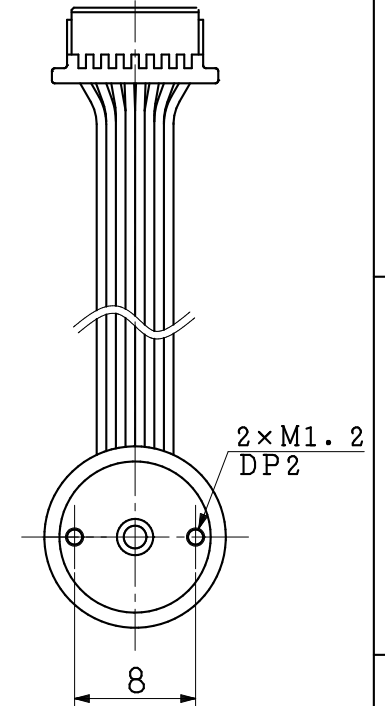
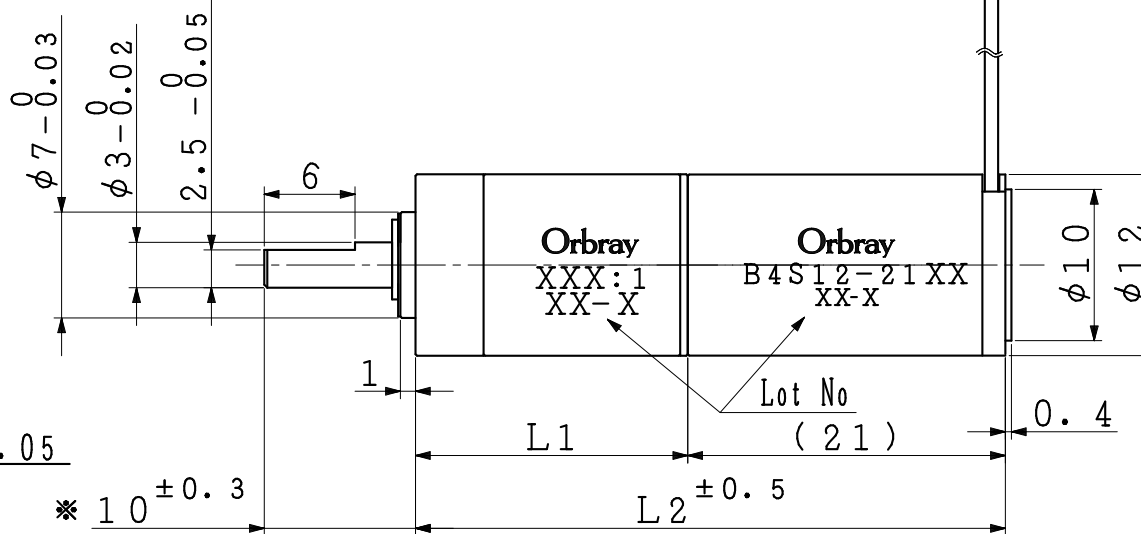
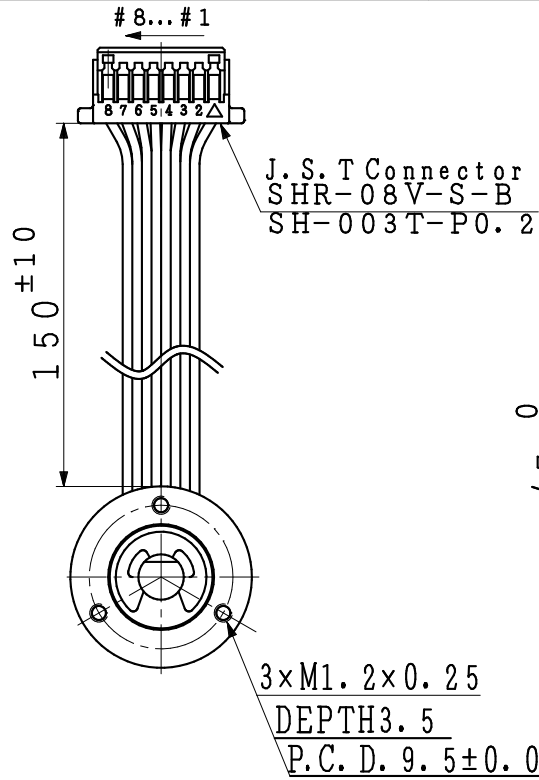
Orbray



No	Sym
#1	U
#2	V
#3	W
#4	Vdd
#5	GND
#6	Hu
#7	Hv
#8	Hw

MOTOR LENGTH

GEAR RATIO	L1	L2
3.5	14.2	35.2
4.8	14.2	35.2
12	18	39
23	18	39
58	21.8	42.8
107	21.8	42.8
509	25.7	46.7



NOTE 1) MARKED(\*) IS OUTPUT SHAFT LENGTH MEASURED WHEN IT IS PUSHED TO MOTOR SIDE.

\*印寸法は出力軸をモータ側に押しつけた時の値を示す。

2) LOT NO.

EXAMPLE) JANUARY, 2018

T18-A1

JANUARY:A, FEBRUARY:B...DECEMBER:L

1月:A, 2月:B...12月:L

「-」 : MADE IN THAILAND

「-」有り : 海外工場生産

「-」NONE : MADE IN JAPAN

「-」無し : 国内工場生産

THE END TWO DIGIT OF CHRISTIAN YEAR

西暦年数末尾数字2桁

3) THE LEAD WIRE IS AWG28 UL3302.

リード線はAWG28 UL3302を使用する。

4) OUTSIDE DIAMETER IS NOT APPLIED TO THE CAULKING.

外径寸法公差はカシメ部を除く。

5) 3 × M1.2 AND LEAD WIRE DRAWING POSITIONS ARE OUT OF DIMENSIONAL CONTROL.

3 × M1.2 とリード線引き出し角度は寸法管理外とする。

TOLERANCE				△	×				
DIMENSION (±)				△	×				
	0	1	2	3	±1°				
L ≤ 6	0.05	0.1	0.15	0.2	△	×			
6 < L ≤ 30	0.1	0.1	0.2	0.5	△	×			
30 < L ≤ 120	0.15	0.2	0.3	0.8	△	×			
120 < L	0.2	0.3	0.5	1.2	△	×			
MATERIAL	FINISH	QTY.	SCALE	2/1	TYPE	B4S12-21P			
			UNIT	1/1mm	TITLE	Outline Drawing			
APPD.	CHK.	DSGN.	DRW.	DWG.NO.					
				REF.NO.					
		05-Feb-18	05-Feb-18	CHK.NO.			REMARK		